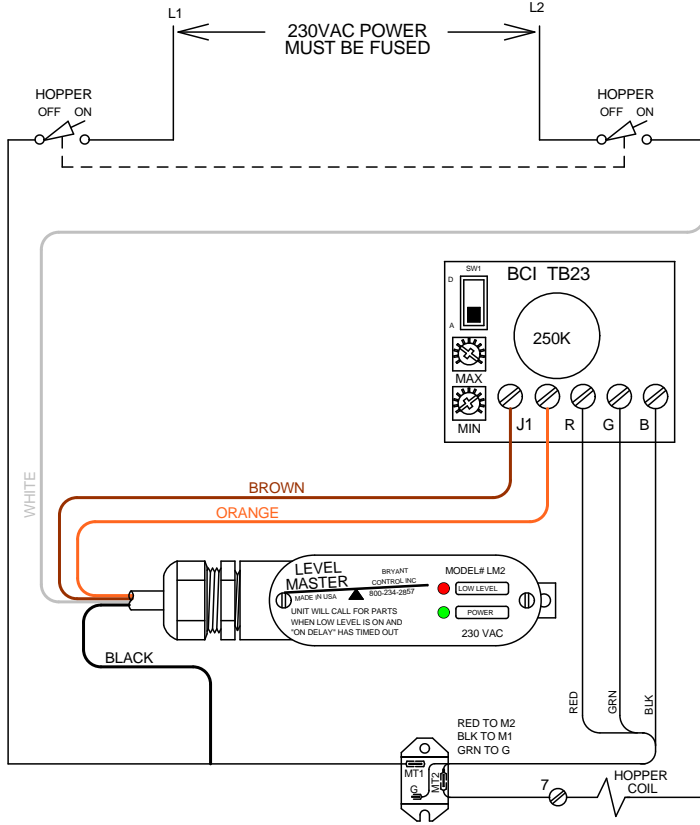


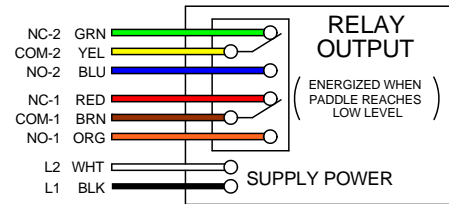
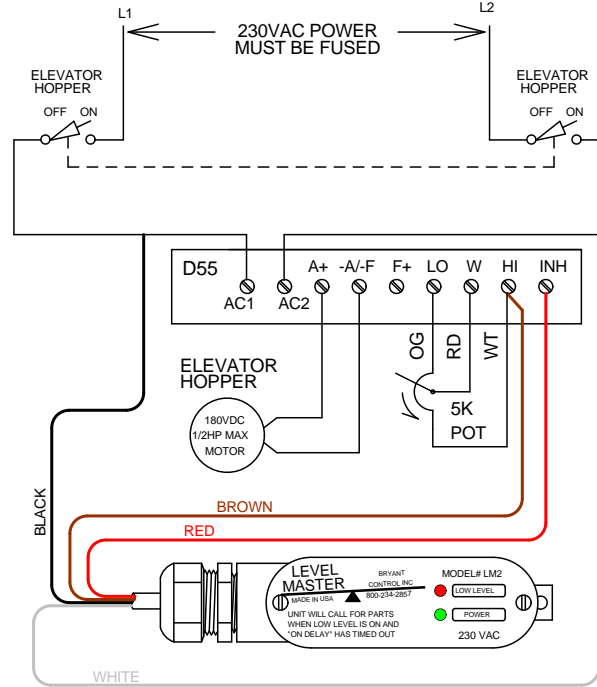


# TYPICAL WIRING DIAGRAMS FOR INSTALLATION OF LM2CC "LEVEL MASTER" BOWL LEVEL CONTROL

## VIBRATORY HOPPER APPLICATION



## DC MOTOR CONTROL APPLICATION



**WARNING:** Black and white leads must be connected to power through fuse or circuit breaker.

TYPICAL HOOKUP { J1 (ENABLE) USE BROWN & ORANGE  
D55 (INHIBIT) USE BROWN & RED

## TIME DELAY ADJUSTMENT:

- 1) DISCONNECT POWER!!
- 2) REMOVE COVER AND CIRCUIT BOARD
- 3) SET "ON DELAY" TO DESIRED VALUE (0-10 SECONDS)
- 4) SET "OFF DELAY" TO DESIRED VALUE (0-10 SECONDS)
- 5) REPLACE BOARD AND COVER

- 0 SECONDS - NO DELAY
- 5 SECOND DELAY
- 10 SECOND DELAY

NOTE: OTHER DELAYS ARE POSSIBLE ANYWHERE BETWEEN THESE 0-10 SECOND SETTINGS

